

MAX HOLSTE MH1521 BROUSSARD

<u>SIPA F/L #</u>	<u>"NOMBRE" "NUMBER"</u>	<u>DATE DE SORTIE/ RELEASE DATE</u>	<u>NO. DE SERIE</u>		<u>NUMBER DANS LA SERIE</u>	<u>SERIE</u>	<u>1RE AFFECTATION FIRST ASSIGNMENT</u>	<u>REGISTRATION/SERIAL NUMBER AND CODE HISTORY</u>	
			<u>MH1521M</u>	<u>MH1521C</u>					
	1	17/11/52		01	1	PROTOTYPE	MAX HOLSTE	F-WGIU	F-BGIU
	2	29/03/53		02	2	PROTOTYPE	MAX HOLSTE	F-WFOB	F-BFOB
				03		STATIC TEST			
	3	12/10/54	04		1	PRESERIE MILITAIRE	1ST ADLA	04/F-ZWSP/41-AC	04/F- OW
	4	06/07/54		06	1	1ST CIVIL	1ST UPPER VOLTA	F-OAQM	XT-AAB
	5	16/07/55	05		2	PRESERIE MILITAIRE	2ND ADLA	05/F-SDBK	05/F-ZLAC
	6	01/04/55	06		3	PRESERIE MILITAIRE	3RD ADLA	06/F-SDBL	06/F-SFPH
	7	21/07/55		07	2	2ND CIVIL	SOCIETE BYRRH	F-GGCN <u>CNX 270709</u>	
	8	22/07/55		1	3	3RD CIVIL	2ND UPPER VOLTA	F-BEHE <u>DEST</u>	
	9	10/08/55	07		4	PRESERIE MILITAIRE	4TH ADLA	F-OASM	XT-AAC
	10	02/02/56	08		5	PRESERIE MILITAIRE	5TH ADLA	07/F-SDBM	07/41-AI
	11	27/02/56		2	4	4TH CIVIL	TUNISIA	08/F-SDBN	08/F-ZWTG
	12	05/04/56	09		6	PRESERIE MILITAIRE	6TH ADLA	08/44-CF	08/11-OB (Sep 78)
	13	18/06/56	010		7	PRESERIE MILITAIRE	7TH ADLA	F-OASN	TS-ASN
	14	23/03/56	011		8	PRESERIE MILITAIRE	8TH ADLA	09/F-SDNO <u>WO 170857</u>	
	15	23/03/56	012		9	PRESERIE MILITAIRE	9TH ADLA	F-BFKS	010/F-ZWTI
	16	20/07/56	013		10	PRESERIE MILITAIRE	10TH ADLA	010/F-SFZD	010/5-MQ
	17	05/04/56	014		11	PRESERIE MILITAIRE	11TH ADLA	F-BFKS	N110TX
	18	04/04/56	015		12	PRESERIE MILITAIRE	12TH ADLA	011/F-SDNQ	011/F-SDLU
	19	23/04/56	016		13	PRESERIE MILITAIRE	13TH ADLA	011/12-XG (Jun 81)	N811MH
								012/F-SDNR <u>WO 251161</u>	
								013/F-SDNS	013/F-RABS
								013/43-BM <u>PVD BERLIN-TEGEL BY 0692</u>	
								014/F-SDNT <u>WO 060961</u>	
								015/F-SDNU	015/ZG/ELO
								015/314-DB (Jun 77)	015/721-EP (Jun 01)
								016/F-SDNV	016/ZH (ELO 2/45)
								016/EF	016/070-MG (Jun 82)

	20	14/05/56	017		14	PRESERIE MILITAIRE	14TH ADLA
	21	17/05/56	018		15	PRESERIE MILITAIRE	15TH ADLA
	22	31/05/56	019		16	PRESERIE MILITAIRE	16TH ADLA
	23	02/08/56	020		17	PRESERIE MILITAIRE	17TH ADLA
	24	18/08/56		3	5	5TH CIVIL	3RD UPPER VOLTA
	25	1956	021		18	PRESERIE MILITAIRE	1ST ALAT
	26	1956	022		19	PRESERIE MILITAIRE	2ND ALAT
	27	05/07/56	1		1	1ST TRANCHE SRS. M	18TH ADLA
	28	20/08/56	2		2	1ST TRANCHE SRS. M	19TH ADLA
	29	02/08/56	3		3	1ST TRANCHE SRS. M	20TH ADLA
	30	10/09/56	4		4	1ST TRANCHE SRS. M	21ST ADLA
3	31	10/09/56	5		5	1ST TRANCHE SRS. M	22ND ADLA
	32	04/10/56	6		6	1ST TRANCHE SRS. M	23RD ADLA
	33	24/10/56	7		7	1ST TRANCHE SRS. M	24TH ADLA
	34	24/10/56	8		8	1ST TRANCHE SRS. M	25TH ADLA
	35	26/10/56	9		9	1ST TRANCHE SRS. M	26TH ADLA
8?	36	06/11/56	10		10	1ST TRANCHE SRS. M	27TH ADLA
	37	06/11/56	11		11	1ST TRANCHE SRS. M	28TH ADLA
	38	21/11/56	12		12	1ST TRANCHE SRS. M	29TH ADLA
SA11	39	18/12/56	13		13	1ST TRANCHE SRS. M	30TH ADLA
	40	15/01/57	14		14	1ST TRANCHE SRS. M	31ST ADLA
	41	15/01/57	15		15	1ST TRANCHE SRS. M	32ND ADLA
14	42	14/01/57	16		16	1ST TRANCHE SRS. M	33RD ADLA
	43	15/01/57	17		17	1ST TRANCHE SRS. M	34TH ADLA
	44	15/01/57	18		18	1ST TRANCHE SRS. M	35TH ADLA
	45	14/01/57	19		19	1ST TRANCHE SRS. M	36TH ADLA

	N164MH	N16MH
	017/F-SDNW <u>WO 131058</u>	
	018/F-SDNX	018/ZZ/ELO
	N18TX	
	019/F-SDNY	PG-339 (2) (ARG)
	020/F-SDNZ	020/F-ZWUA
	F-ZBBO	020/F-MAYU
	F-OAVO	XT-AAD
	021/F-ZVMB	021/(F-M)AOC
	F-BVSS	C-GJKG
	022/(ALAT)	F-ZBBP
	F-BVSU	N4022/"43-FJ"
	1/F-SCOL <u>WO 060657</u>	
	2/5-MM <u>ACC 301159</u>	
	3/ADLA <u>ACC 060757</u>	
	4/F-SFYC <u>WO 031256</u>	
	5/F-ZKAB	5/F-SFPG
	5/F-SFPO	5/F-RACL
	5/44-CA (Noted 93)	(F-GIBF)
	6/44-CM (Oct 86)	6/13-TB
	HB-RSL	
	7/2-HH	7/12-XG
	8 (ADLA)	TU-TXA
	9 (ADLA) <u>WO 251059</u>	
	10/F-SDBI	10/11-OB (Jun 72)
	F-BOHP	
	11/F-SCOM	11/41-AA (Jun 77)
	12/F-ZKAI	12/F-SFPL
	<u>DEST. WFU C O A EXP 0973, CNX 070275</u>	
	13/F-ZWTL	13/43-BM
	F-GJBF/"BF-13"	
	14/F-SFPC <u>WO 281258 OR 270864</u>	
	15/F-SFYK <u>WO 280857</u>	
	16 (ELO 2/45)	16 (GALO 53)
	16/BC (GI 312)	16/41-AC (Jun 86)
	LN-WNB	
	17 (ADLA) <u>WO 080659</u>	
	18/314-DA (Jul 81)	18/118-IW (Jul 83)
	<u>STD LE BOURGET</u>	
	19/F-SCON	19/F-ZKAP

						19/F-SFZP	F-BNEN
						G-CBGL/ "3303"	
						F-OAZR	XU-
46	22/03/57		4	6	6TH CIVIL	CAMBODIA	
47	03/05/57	20		20	1ST TRANCHE SRS. M	37TH ADLA	20/65-CF (Jan 83)
						F-WGKG	F-GGKG
						N5857	
48	15/01/57	21		21	1ST TRANCHE SRS. M	38TH ADLA	21/F-ZKAR
						21/F-SCCI (Noted 64)	F-BNEO
49	29/01/57	22		22	1ST TRANCHE SRS. M	39TH ADLA	22/F-MATR
50	01/07/57	23		23	1ST TRANCHE SRS. M	3RD ALAT	23/(F-M)BFV 23/(F-M)ATR (May 73)
						F-GGKS	N315XB
51	31/01/57	24		24	1ST TRANCHE SRS. M	40TH ADLA	24/F-SCCB 24/41-AE
						<u>PVD VALENCE-CHABEUIL BY 0587 AS "GG"</u>	
52	19/02/57	25		25	1ST TRANCHE SRS. M	41ST ADLA	25/F-SFZQ <u>WO 110958</u>
53	08/04/57	26		26	1ST TRANCHE SRS. M	42ND ADLA	26 (ADLA) <u>WO 010463</u>
54	19/02/57	27		27	1ST TRANCHE SRS. M	43RD ADLA	27 (ADLA) N5833E
55	04/03/57	28		28	1ST TRANCHE SRS. M	44TH ADLA	28/F-ZKAY 28/F-MCYB
						<u>CNX 160371</u>	
56	06/03/57	29		29	1ST TRANCHE SRS. M	4TH ALAT	29/(F-M)ANA <u>WFU MONTAUBAN BY 1081</u>
57	12/03/57	30		30	1ST TRANCHE SRS. M	45TH ADLA	30 (ADLA) <u>WO 210659</u>
58	26/06/57		5	7	7TH CIVIL	MAX HOLSTE	F-WICX F-BICX
						C-GRBL/30-QA	G-CLLK
59	05/04/57		20	8	8TH CIVIL	1ST ARGENTINA	F-ZVMB (1) LV-FYA
						PG-333 (ARG AF)	LV-FYA
60	23/03/57		21	9	9TH CIVIL	2ND ARGENTINA	F-ZVMB (4) LQ-FZH
						<u>DEST 101270</u>	
61	17/04/57		22	10	10TH CIVIL	3RD ARGENTINA	F-ZVMB (5) LQ-FZJ
						<u>WO 151271?</u>	
62	APRIL 57		23	11	11TH CIVIL	4TH ARGENTINA	F-ZVMB (2) LV-FYB
						PG-331 (ARG AF) <u>WO 121075</u>	
63	07/05/57	31		31	1ST TRANCHE SRS. M	46TH ADLA	31/F-SFYU <u>WO 260458</u>
35 64	03/05/57	32		32	1ST TRANCHE SRS. M	47TH ADLA	32/F-MAMT 32/10-KE
						F-GGKH	
65	29/06/57	33		33	1ST TRANCHE SRS. M	5TH ALAT	33/(F-M)ANB 33/(F-M)AMT
						<u>STD MONTAUBAN BY 0693, STD DAX AS "MJT" 0509</u>	
66	07/05/57	34		34	1ST TRANCHE SRS. M	48TH ADLA	34/F-ZKAE 34/F-SEWV
						34/2-HD	F-BNEQ
67	13/05/57		24	12	12TH CIVIL	5TH ARGENTINA	F-ZVMB (6) LQ-FZL
						<u>WFU 90, PVD AEROPARQUE, BUENOS AIRES 0690</u>	
68	13/05/57		25	13	13TH CIVIL	6TH ARGENTINA	F-ZVMB (7) LQ-FZM

69	23/05/57		26	14	14TH CIVIL	7TH ARGENTINA	LV-WGR F-ZVMB (3)	N6HZ LQ-FYS
70	25/05/57	35		35	1ST TRANCHE SRS. M	49TH ADLA	<u>WFU 90</u> 35/F-ZKAF (2)	35/F-SFPA
71	23/05/57	36		36	1ST TRANCHE SRS. M	50TH ADLA	<u>WFU, C O A EXP 0574</u> 36 (ADLA) <u>WO 140662</u>	
72	21/06/57		27	15	15TH CIVIL	8TH ARGENTINA	F-ZVMB (8)	(F-WICX)
73	19/06/57		28	16	16TH CIVIL	9TH ARGENTINA	PG-339 (ARG AF) <u>WO 180786</u> F-ZVMB (9)	LQ-FZN
74	21/06/57		29	17	17TH CIVIL	10TH ARGENTINA	<u>MINOR ACCIDENT 150777 NOTHING FURTHER KNOWN</u> F-ZVMB (10)	LQ-FZP
75	23/07/57	37		37	1ST TRANCHE SRS. M	51ST ADLA	<u>WFU 90</u> 37 (ADLA) (May 57)	37/44-CI
76	20/08/57	38		38	1ST TRANCHE SRS. M	6TH ALAT	38/F-MBFU 38/(F-M)MJA (Noted 80) (F-BFKL) <u>PVD ANGERS MARCE</u>	
77	11/06/57	39		39	1ST TRANCHE SRS. M	52ND ADLA	39 (ADLA) 39/44-CF	39/(314-)DA 39/65-CF
78	24/07/57		30	18	18TH CIVIL	1ST AEROTEC	F-OBDC	F-BLLD
79	24/07/57		31	19	19TH CIVIL	2ND AEROTEC	F-OBDD	F-BLLE
80	06/08/57		32	20	20TH CIVIL	1ST GABON	F-OBCU	TR-LOG
81	06/08/57		33	21	21ST CIVIL	2ND GABON	F-OBCV	TR-LOF
82	02/08/57		34	22	22ND CIVIL	3RD AEROTEC	F-OBDE	F-BLLF
83	23/08/57	40		40	1ST TRANCHE SRS. M	53RD ADLA	40/GQ	40/44-CI (Oct 84)
84	26/09/57	41		41	1ST TRANCHE SRS. M	54TH ADLA	<u>PVD NARBONNE PLAGE</u> <u>PVD ST. VICTORET 0412</u> 41 (ADLA) <u>WO 231263</u>	
85	24/11/57	42		42	1ST TRANCHE SRS. M	7TH ALAT	42 (ALAT)	42/(F-M)AGA
86	1957	43		43	1ST TRANCHE SRS. M	1ST AERONAVALE	<u>PVD MELUN-VILLAROCHE 0609</u> 43/F-YBAF	F-BIEN
87	31/07/57	44		44	1ST TRANCHE SRS. M	55TH ADLA	44/F-ZKAO	44/(F-SF)ZO
88	07/08/57	45		45	1ST TRANCHE SRS. M	8TH ALAT	<u>WFU, COA SUSP 110377</u> 45 (ALAT) <u>WO 251158</u>	
89	19/09/57	46	46?	46	1ST TRANCHE SRS. M	SUDAN	ST-ABJ (C/N 46C)	
90	26/09/57	47	47?	47	1ST TRANCHE SRS. M	1ST MOROCCO	47/CN-AHA (C/N 47C) <u>PVD CASABLANCA-ANFA BY</u>	
91	14/11/57	48		48	1ST TRANCHE SRS. M	58TH ADLA	48/F-SFPI <u>DAM 050669. SOC</u>	
92	14/11/57	49		49	1ST TRANCHE SRS. M	59TH ADLA	49/F-SFPJ <u>ACC 020160</u>	
93	09/10/57	50		50	1ST TRANCHE SRS. M	60TH ADLA	50 (ADLA)	50/5-MR
94	16/12/57	51		51	1ST TRANCHE SRS. M	2ND MOROCCO	50/41-AB (Jun 85) <u>WO 180287</u> 51/CN-AHB? <u>WFU</u>	
95	14/12/57	52		52	1ST TRANCHE SRS. M	62ND ADLA	52/F-SFPN	52/CN-A
96	22/11/57	53		53	1ST TRANCHE SRS. M	63RD ADLA	53/F-SFPO F-GGKI	53/12-XF (Sep 74) N530MH

	97	14/11/57	54	54	1ST TRANCHE SRS. M	64TH ADLA	54/F-SFPP	54/CN-A	
	98	14/11/57	55	55	1ST TRANCHE SRS. M	65TH ADLA	55/F-SFZA	WO 050360	
	99	14/11/57	56	56	1ST TRANCHE SRS. M	66TH ADLA	56/F-SFPH	WO 050958	
	100	17/10/57		35	23	23RD CIVIL	4TH AEROTEC	F-OBDF	DEST
	101	05/11/57		37	24	24TH CIVIL	5TH AEROTEC	F-OB DG	F-BLLG
	102	03/12/57		39	25	25TH CIVIL	6TH AEROTEC	F-OB DH	DEST, CNX 060164
	103	03/04/58	57	57	1ST TRANCHE SRS. M	67TH ADLA	57/F-SFPR	57/CN-A	
	104	29/01/58	58	58	1ST TRANCHE SRS. M	68TH ADLA	58/F-SFZE	58/CN-A	
	105	29/01/58	59	59	1ST TRANCHE SRS. M	69TH ADLA	59/F-UJAB	59/5-MP	
	106	16/12/57	60	60	1ST TRANCHE SRS. M	70TH ADLA	59/HA (ADLA) (Aug 78)		
	107	16/12/57	61	61	1ST TRANCHE SRS. M	3RD MOROCCO	60/F-SFZB	WO 060558	
	108	17/02/58	62	62	1ST TRANCHE SRS. M	72ND ADLA	61/CN-AHC?		
	109	1958	63	63	1ST TRANCHE SRS. M	2ND AERONAVALE	62/F-SFZG	WO 070959	
83	110	15/01/58	64	64	1ST TRANCHE SRS. M	73RD ADLA	63/F-YDJL/10.S.37	F-BIEO	
	111	05/01/58	65	65	1ST TRANCHE SRS. M	74TH ADLA	64/F-UJAC	64/41-AK	
	112	1958	66	66	1ST TRANCHE SRS. M	3RD AERONAVALE	F-GOMH		
	113	12/02/58	67	67	1ST TRANCHE SRS. M	75TH ADLA	65/F-SFZK	65/F-ZKZK	
	114	32/12/58	68	68	1ST TRANCHE SRS. M	9TH ALAT	65/F-UHOE	F-BNET	
	115	15/01/58	69	69	1ST TRANCHE SRS. M	76TH ADLA	66 (AN)/10.S.38	WO 021259	
	116	28/01/58	70	70	1ST TRANCHE SRS. M	77TH ADLA	67/F-UJAD	F-BNEU	
	117	19/03/58	71	71	1ST TRANCHE SRS. M	78TH ADLA	<u>F/L AT COMPEIGNE 03</u>		
	118	12/02/58	72	72	1ST TRANCHE SRS. M	79TH ADLA	68/(F-M)MGA	WFU MONTELMAR 1101	
	119	17/02/58	73	73	1ST TRANCHE SRS. M	80TH ADLA	69/F-SFPD	WO 180963	
	120	17/02/58	74	74	1ST TRANCHE SRS. M	81ST ADLA	70 (ADLA)	70/43-BO (Jul 85)	
	121	14/02/58	75	75	1ST TRANCHE SRS. M	10TH ALAT	70/10-KE	PVD VANNES MONTERBLAN	
	122	27/02/58		36	26	26TH CIVIL	AIR MADAGASCAR	71/F-SFZO	WO 270568
	123	19/03/58	76	76	1ST TRANCHE SRS. M	82ND ADLA	72/F-SFZP	72/(F-M)AGQ	
	124	12/03/58	77	77	1ST TRANCHE SRS. M	83RD ADLA	<u>WFU</u>		
	125	25/03/58	78	78	1ST TRANCHE SRS. M	11TH ALAT	73/F-UJAE	F-BNEV	
	126	07/05/58	79	79	1ST TRANCHE SRS. M	84TH ADLA	74/F-UJAF	WO 64, SOC 66	
	127	03/04/58	80	80	1ST TRANCHE SRS. M	85TH ADLA	75/(F-M)AND	WO 120265	
	128	19/03/58	81	81	1ST TRANCHE SRS. M	86TH ADLA	F-OBGQ	5R-MAW	
	129	03/03/58	82	82	1ST TRANCHE SRS. M	87TH ADLA	76/F-UJAG	STD PAU BY 1081	
							77 (ADLA)	77/CN-A	
							78/(F-M)ANE	78/(F-M)CWP	
							LN-WNA	SE-BMH	
							OK-		
							F-BFAC (3)	79 (ADLA)	
							80/F-UJAH	F-BMML	
							81/F-UJAI	TL-KAK	
							82/F-UJAC	F-BMSA	

	130	16/04/58	83	83	1ST TRANCHE SRS. M	88TH ADLA	83/F-UJAK	83/CN-A
	131	16/04/58	84	84	1ST TRANCHE SRS. M	89TH ADLA	84/F-UJAL	84/118-IU
	132	16/04/58	85	85	1ST TRANCHE SRS. M	12TH ALAT	85/(F-M)ANF	<u>WO 050263</u>
112	133	16/04/58	86	86	1ST TRANCHE SRS. M	13TH ALAT	86/(F-M)NMB	F-GFMN/MN
	134	16/04/58	87	87	1ST TRANCHE SRS. M	90TH ADLA	87/F-UJAM	F-BMSB
	135	30/04/58	88	88	1ST TRANCHE SRS. M	91ST ADLA	88/F-UJAN	88/CN-A
	136	16/04/58	89	89	1ST TRANCHE SRS. M	92ND ADLA	89/F-UJAO	89/CN-A
	137	07/05/58	90	90	1ST TRANCHE SRS. M	93RD ADLA	90/F-SFZT	90/CN-A
	138	30/04/58	91	91	1ST TRANCHE SRS. M	94TH ADLA	91/F-SCGI	91/44-CK
							<u>PVD BRIENNE LE CHATEAU</u>	
	120	30/04/58	92	92	1ST TRANCHE SRS. M	95TH ADLA	92/F-SDLA	92/31-GW (Noted 82)
							G-BJGW	F-GHNU
	140	04/06/58	93	93	1ST TRANCHE SRS. M	14TH ALAT	93/(F-M)ANH	93/(F-M)ATQ (May 73)
	141	21/05/58	94	94	1ST TRANCHE SRS. M	96TH ADLA	94/F-SDBP	94/(F-M)BPA
	142	07/05/58	95	95	1ST TRANCHE SRS. M	97TH ADLA	95 (ADLA)	95/5-ML (Jun 78)
	143	21/05/58	96	96	1ST TRANCHE SRS. M	98TH ADLA	96/F-SCGK	F-BMMM
	144	27/05/58	97	97	1ST TRANCHE SRS. M	99TH ADLA	97/F-SCGL	F-BMMN
	145	06/06/58	98	98	1ST TRANCHE SRS. M	100TH ADLA	98/F-SCGM	<u>WO 080670</u>
	146	27/05/58	99	99	1ST TRANCHE SRS. M	101ST ADLA	99/F-SCGN	99/5-ML (Jun 78)
	147	28/06/58	100	100	1ST TRANCHE SRS. M	15TH ALAT	100/(F-M)BFO	100/(F-M)AOB
	148	11/06/58	101	101	1ST TRANCHE SRS. M	102ND ADLA	101 (ADLA)	TR-LRA
							<u>PVD LIBREVILLE</u>	
	149	05/07/58	102	102	1ST TRANCHE SRS. M	16TH ALAT	102/(F-M)ANJ	102/(F-M)BCB
	150	11/06/58	103	103	1ST TRANCHE SRS. M	103RD ADLA	103/F-SCHB	<u>WO 150659</u>
	151	11/06/58	104	104	1ST TRANCHE SRS. M	104TH ADLA	104/F-UKIA	104/13-TB(Noted 77)
	152	03/07/58	105	105	1ST TRANCHE SRS. M	105TH ADLA	105/F-SFKW	CN-AHF (C/N 65C)
	153	24/06/58	106	106	1ST TRANCHE SRS. M	106TH ADLA	106/F-SFKX	106/43-BU
							F-GKJT/33-JT	
	154	24/06/58	107	107	1ST TRANCHE SRS. M	107TH ADLA	107/F-UKIB	TJ-XAB
	155	03/07/58	108	108	1ST TRANCHE SRS. M	108TH ADLA	108/F-UJAP	108/313-TD
	156	24/07/58	109	109	1ST TRANCHE SRS. M	109TH ADLA	109/F-UIIZ	F-BMQL
	157	09/07/58	110	110	1ST TRANCHE SRS. M	17TH ALAT	110/(F-M)ANK	<u>WFU 0275</u>
	158	29/07/58	111	111	1ST TRANCHE SRS. M	110ND ADLA	111/F-SFPH	<u>WO 311258</u>
	159	21/10/58	112	112	1ST TRANCHE SRS. M	111TH ADLA	112 (ADLA)	5V-MAB
	160	29/07/58	113	113	1ST TRANCHE SRS. M	112ND ADLA	113/F-SEWX	113/2-HH (Noted 70)
							113/2-HH (Jun 78)	<u>DUMPED CHATEAUDUN BY</u>
	161	30/07/58	114	114	1ST TRANCHE SRS. M	113RD ADLA	114/F-SFZX	114/118-IW (Jul 72)
	162	31/07/58	115	115	1ST TRANCHE SRS. M	114TH ADLA	115/F-SFZY	F-BMQM
	163	31/07/58	116	116	1ST TRANCHE SRS. M	115TH ADLA	116/F-SFZU	<u>ACC 040659</u>
	164	17/09/58	117	117	1ST TRANCHE SRS. M	116TH ADLA	117/F-SFZW	<u>WO 150660</u>
	165	17/09/58	38	27	27TH CIVIL	ROGERS SAHARA	F-OBIY	F-BLLH

166	01/08/58	118		118	1ST TRANCHE SRS. M	18TH ALAT
167	05/09/58		40	28	28TH CIVIL	EMIC BRASIL
168	29/09/58	119		119	1ST TRANCHE SRS. M	117TH ADLA
169	30/09/58	120		120	1ST TRANCHE SRS. M	19TH ALAT
170	02/10/58	121		121	1ST TRANCHE SRS. M	118TH ADLA
171	07/10/58	122		122	1ST TRANCHE SRS. M	119TH ADLA
172	27/10/58	123		123	1ST TRANCHE SRS. M	120TH ADLA
173	26/10/58	124		124	1ST TRANCHE SRS. M	121ST ADLA
174	27/10/58	125		125	1ST TRANCHE SRS. M	122ND ADLA
175	30/10/58	126		126	1ST TRANCHE SRS. M	123RD ADLA
176	28/10/58	127		127	1ST TRANCHE SRS. M	20TH ALAT
177	15/11/58	128		128	1ST TRANCHE SRS. M	124TH ADLA
178	20/11/58	129		129	1ST TRANCHE SRS. M	125TH ADLA
179	20/11/58	130		130	1ST TRANCHE SRS. M	126TH ADLA
180	03/12/58	131		131	1ST TRANCHE SRS. M	127TH ADLA
181	03/12/58	132		132	1ST TRANCHE SRS. M	128TH ADLA
182	17/12/58	133		133	1ST TRANCHE SRS. M	21ST ALAT
183	31/12/58	134		134	1ST TRANCHE SRS. M	129TH ADLA
184	18/12/58	135		135	1ST TRANCHE SRS. M	130TH ADLA
185	18/12/58	136		136	1ST TRANCHE SRS. M	131ST ADLA
186	22/12/58	137		137	1ST TRANCHE SRS. M	132ND ADLA
187	28/12/58	138		138	1ST TRANCHE SRS. M	133RD ADLA
188	17/12/58	139		139	1ST TRANCHE SRS. M	22ND ALAT
189	30/12/58	140		140	1ST TRANCHE SRS. M	134TH ADLA
190	30/12/58	141		141	1ST TRANCHE SRS. M	135TH ADLA
191	20/01/59	142		142	1ST TRANCHE SRS. M	136TH ADLA
192	07/01/59	143		143	1ST TRANCHE SRS. M	23RD ALAT
193	21/01/59	144		144	1ST TRANCHE SRS. M	137TH ADLA

SCR

118/ZJ (ELO 3/45)	118 (ALAT) (Aug 92)
N118MH	
F-OBGP	PP-FVJ
<u>DISAPPEARED 230977</u>	
119/F-UJAQ	119/CN-A
120/(F-M)BFX	WO 270667
121/F-UJAR	121/F-UJAT
F-BMMO	WFU CNX 0284
122/F-UIIG	WO 170959
123/F-SFPS	5R-M
124 (ADLA)	124/A (ET 2.60)
124/- (May 81)	124/HF (May 85)
F-GRES	
125/F-UKIC	TJ-XAC (1)
126/F-UKID	TJ-XAD
127/(F-M)CGA	F-WGGK
LY-	
128 (ADLA)	128/44-CH (May 73)
<u>WFU ROMORANTIN BY 82</u>	
129 (ADLA)	TN-KAE
130 (ADLA)	5R-M
131 (ADLA)	TY-A
132 (ADLA)	DBR 070765
133/(F-M)ANL	PVD LA BAULE
134/F-SFPL	5R-M
135 (ADLA)	WO 210968
136 (ADLA)	5U-MAE
137 (ADLA)	137/C (ET 2.60)
137/67-OQ	SOLD 81
138/F-SELA	138/(F-UI)XB (ET 2.60)
<u>DAM 030480, DUMPED TOUL BY 0588</u>	
139/(F-M)BEY	PVD TOULOUSE-BLAGNAC 9
140/F-SFPH	TT-KAE
141/F-SELB	WO 191159
142/F-SEWR	142/HN (ISTRES BF)
<u>SOLD 81</u>	
143/(F-M)BEW	F-WGGQ
N315XC	
144/F-UIBE	144/F-UIBQ
144/CD (ELA 44)	F-OGKE

194	03/02/59	145		145	1ST TRANCHE SRS. M	24TH ALAT
195	04/02/59	146		146	1ST TRANCHE SRS. M	138TH ADLA
196	24/02/59	147		147	1ST TRANCHE SRS. M	139TH ADLA
197	04/02/59	148		148	1ST TRANCHE SRS. M	140TH ADLA
198	28/02/59	149		149	1ST TRANCHE SRS. M	25TH ALAT
199	03/03/59	150		150	1ST TRANCHE SRS. M	26TH ALAT
200	02/04/59	151		151	1ST TRANCHE SRS. M	141ST ADLA
201	09/03/59	152		152	1ST TRANCHE SRS. M	142ND ALAT
202	19/03/59	153		153	1ST TRANCHE SRS. M	143RD ALAT
203	26/03/59	154		154	1ST TRANCHE SRS. M	144TH ALAT
204	02/04/59	155		155	1ST TRANCHE SRS. M	145TH ALAT
205	06/04/59	156		156	1ST TRANCHE SRS. M	146TH ALAT
206	06/04/59	157		157	1ST TRANCHE SRS. M	147TH ALAT
207	08/04/59		43	29	29TH CIVIL	2ND SUDAN
208	15/04/59	158		158	1ST TRANCHE SRS. M	148TH ADLA
209	15/04/59	159		159	1ST TRANCHE SRS. M	149TH ADLA
210	28/04/59	160		160	1ST TRANCHE SRS. M	150TH ADLA
211	28/04/59	161		161	1ST TRANCHE SRS. M	151ST ADLA
212	05/05/59	162		162	1ST TRANCHE SRS. M	152ND ADLA
213	13/05/59	163		163	1ST TRANCHE SRS. M	153RD ADLA
214	14/05/59	164		164	1ST TRANCHE SRS. M	154TH ADLA
215	30/05/59	165		165	1ST TRANCHE SRS. M	155TH ADLA
216	30/05/59	166		166	1ST TRANCHE SRS. M	156TH ADLA
217	30/05/59	167		167	1ST TRANCHE SRS. M	157TH ADLA
218	02/06/59	168		168	1ST TRANCHE SRS. M	158TH ADLA
219	02/06/59	169		169	1ST TRANCHE SRS. M	159TH ADLA
108	220	02/07/59		170	1ST TRANCHE SRS. M	160TH ADLA
221	16/06/59	171		171	1ST TRANCHE SRS. M	161ST ADLA
222	16/06/59		41	30	30TH CIVIL	4TH MOROCCO
223	02/07/59	172		172	1ST TRANCHE SRS. M	162ND ADLA
224	02/07/59	173		173	1ST TRANCHE SRS. M	163RD ADLA

CNX 250511

145/(F-M)ANI	145/F-MASA
146 (ADLA)	5U-M
147 (ADLA) <u>WO 180161</u>	
148 (ADLA) <u>WO 090959</u>	
149/(F-M)CKA	149/(F-M)MAA
150/(F-M)AND	150/(F-M)BCA
F-BXCQ	F-BUDX
151 (ADLA)	TJ-XAE
152/F-UKFC	CN-AHF
153 (ADLA)	TT-KAF
154/F-SCGO	154/HE (NIMES BF)
F-GKRO/315-SM	
155 (ADLA)	155/43-BL
156 (ADLA)	156/10-KE
<u>WRECK AT NOYANT SUR ALLIER</u>	
157 (ADLA)	157/44-CD
F-OBMI	TZ-PMA
TL-KAI (2) <u>WO 071286</u>	
158/F-SELC	158/44-CB
158/3-KZ <u>PVD ST. DIZIER 0717</u>	
159/F-SELD	159/118-IV (Jul 79)
160 (ADLA) <u>ACC 030659</u>	
161 (ADLA)	
162 (ADLA) <u>ACC 290362</u>	
163 (ADLA)	163/Y (ET 2.60)
N163MH	
164/F-SFZI	164/4-WZ
164/2-HE <u>PVD VRAUX BY 99- 0617</u>	
165 (ADLA)	TN-KAH
166 (ADLA)	TU-TXE
167 (ADLA)	TR-LRB
168 (ADLA)	TN-K
169 (ADLA)	5R-M
170/F-SFZL	170/HG (GMT 59)
F-WDPX	F-GDPX
171/F-SFZK <u>WO 010567</u>	
CN-AHD	
172/F-SFPT	172/XR
173 (ADLA)	173/33-XB (May 79)

225	07/07/59	174	174	1ST TRANCHE SRS. M	164TH ADLA
226	01/07/59	175	175	1ST TRANCHE SRS. M	165TH ADLA
227	07/07/59	176	176	1ST TRANCHE SRS. M	166TH ADLA
228	07/07/59	177	177	1ST TRANCHE SRS. M	167TH ADLA
229	20/07/59		42	31	31ST CIVIL 4TH UPPER VOLTA
230	23/07/59	178	178	1ST TRANCHE SRS. M	168TH ADLA
231	24/07/59	179	179	1ST TRANCHE SRS. M	169TH ADLA
232	30/07/59	180	180	1ST TRANCHE SRS. M	170TH ADLA
233	29/07/59	181	181	1ST TRANCHE SRS. M	171ST ADLA
234	05/09/59	182	182	1ST TRANCHE SRS. M	172ND ADLA
235	14/09/59	183	183	1ST TRANCHE SRS. M	173RD ADLA
236	25/09/59	184	184	1ST TRANCHE SRS. M	174TH ADLA
237	28/09/59	185	185	1ST TRANCHE SRS. M	175TH ADLA
238	25/09/59	186	186	1ST TRANCHE SRS. M	176TH ADLA
239	07/10/59	187	1	2ND TRANCHE SRS.M	177TH ADLA
240	04/12/59	188	2	2ND TRANCHE SRS.M	178TH ADLA
241	26/10/59	189	3	2ND TRANCHE SRS.M	179TH ADLA
242	27/10/59	190	4	2ND TRANCHE SRS.M	180TH ADLA
243	05/11/59	191	5	2ND TRANCHE SRS.M	181ST ADLA
244	12/11/59	192	6	2ND TRANCHE SRS.M	182ND ADLA
245	17/11/59	193	7	2ND TRANCHE SRS.M	183RD ADLA
246	17/11/59	194	8	2ND TRANCHE SRS.M	184TH ADLA
247	04/12/59	195	9	2ND TRANCHE SRS.M	185TH ADLA
248	07/12/59	196	10	2ND TRANCHE SRS.M	186TH ADLA
249	07/12/59	197	11	2ND TRANCHE SRS.M	187TH ADLA
250	04/12/59	198	12	2ND TRANCHE SRS.M	188TH ADLA
251	07/12/59	199	13	2ND TRANCHE SRS.M	189TH ADLA
252	21/12/59	200	14	2ND TRANCHE SRS.M	190TH ADLA
253	21/12/59	201	15	2ND TRANCHE SRS.M	191ST ADLA
254	24/12/59	202	16	2ND TRANCHE SRS.M	192ND ADLA
255	24/12/59	203	17	2ND TRANCHE SRS.M	193RD ADLA

PVD WARLUIS

174 (ADLA)	5R-M
175/F-UIIU	175/314-DA (Sep 73)
176/F-SELB	176/44-CC
177 (ADLA)	177/118-IS

WFU

F-OBMY	XT-AAE
178/F-SELG	178/43-BP
179/F-SFZQ	179/Q (ET 2.60)
179/5-MO	179/HT
180/F-SFZR	180/43-BT (Sep 79)
181 (ADLA)	181/65-CD
182/F-UIIV	182/721-EA
183/F-UIIL	183/41-AB
184/F-SFPG	184/070-MH (Nov 79)

WO 210780

185 (ADLA)	185/E (ET 65)
F-WGKJ	F-GGKJ
F-GPRN	D-FMCA
186 (ADLA)	186/5-MP (Nov 79)
187 (ADLA)	187/30-QN

WFU BY 0592, PVD ST YAN BY 0613

188/F-UIBO	6W-SAH
F-BBBS	189 (ADLA)

WO 300563

190 (ADLA)	<u>WO 010763</u>
191 (ADLA)	191/315-SK
192/F-RHGI	G-BKPT/44-GI
193 (ADLA)	<u>WO 120662</u>
194 (ADLA)	6W-SAI
195/F-SFPD	195/43-BU (Jun 83)
F-GDPY	OO-MPJ
196/F-SFPF	196/315-SL
197 (ADLA)	197/41-AC (Jul 77)
198/F-UKWD	198/7-JI
199 (ADLA)	5V-MAA
200 (ADLA)	XT-MAE
201 (ADLA)	201/TU-V
202 (ADLA)	TT-KAA
203 (ADLA)	TT-KAB

	256	21/01/60	204	18	2ND TRANCHE SRS.M	194TH ADLA	204 (ADLA)	TU-TXB
	257	21/01/60	205	19	2ND TRANCHE SRS.M	195TH ADLA	205 (ADLA)	TT-KAC (1)
	258	21/01/60	206	20	2ND TRANCHE SRS.M	196TH ADLA	206 (ADLA)	5U-M
	259	26/01/60	207	21	2ND TRANCHE SRS.M	197TH ADLA	207 (ADLA)	207/43-BL
236 (dated 9/59)	260	27/01/60	208	22	2ND TRANCHE SRS.M	198TH ADLA	207/HD	<u>WO 251181, DLICT CHAMBER</u>
	261	02/02/60	45	32	32ND CIVIL	5TH UPPER VOLTA	208 (ADLA)	208/F-TFMO
	262	04/02/60	209	23	2ND TRANCHE SRS.M	199TH ADLA	F-GDPZ	G-YYYY/208/IR)
	263	08/02/60	210	24	2ND TRANCHE SRS.M	200TH ADLA	F-OBNF	XT-
	264	08/02/60	211	25	2ND TRANCHE SRS.M	201ST ADLA	209 (ADLA)	6W-SAJ
	265	10/05/60	212	26	2ND TRANCHE SRS.M	202ND ADLA	210/F-UIBO	6W-SAK
	266	25/03/60	213	27	2ND TRANCHE SRS.M	203RD ADLA	211 (ADLA)	F-WGKK
	267	23/02/60	214	28	2ND TRANCHE SRS.M	204TH ADLA	F-BFDJ (2)	212 (ADLA)
	268	22/02/60	215	29	2ND TRANCHE SRS.M	205TH ADLA	213 (ADLA)	TU-TXC
	269	26/02/60	216	30	2ND TRANCHE SRS.M	206TH ADLA	<u>WFU</u>	
	270	02/03/60	217	31	2ND TRANCHE SRS.M	207TH ADLA	214 (ADLA)	214/44-CF (May 73)
	271	02/03/60	218	32	2ND TRANCHE SRS.M	208TH ADLA	N50FG	N60FG
	272	23/03/60	219	33	2ND TRANCHE SRS.M	209TH ADLA	215 (ADLA)	215/TU-V
	273	25/03/60	220	34	2ND TRANCHE SRS.M	210TH ADLA	216 (ADLA)	216/TU-V
	274	25/03/60	221	35	2ND TRANCHE SRS.M	211TH ADLA	217/HF (May 82)	G-BKPU
	275	07/04/60	222	36	2ND TRANCHE SRS.M	212TH ADLA	218 (ADLA)	218/12-XF (Jun 78)
	276	13/04/60	223	37	2ND TRANCHE SRS.M	213TH ADLA	219 (ADLA)	219/5T-M
253	277	25/04/60	224	38	2ND TRANCHE SRS.M	214TH ADLA	220 (ADLA)	TU-TXD
	278	13/04/60	225	39	2ND TRANCHE SRS.M	215TH ADLA	221 (ADLA)	221/5T-M
	279	26/04/60	226	40	2ND TRANCHE SRS.M	216TH ADLA	222 (ADLA)	TL-KAF
	280	13/04/60	227	41	2ND TRANCHE SRS.M	217TH ADLA	223 (ADLA)	TN-K
	281	26/04/60	228	42	2ND TRANCHE SRS.M	218TH ADLA	224 (ADLA)	224/GK
	282	30/04/60	229	43	2ND TRANCHE SRS.M	219TH ADLA	224/HR (ISTRES BF)	F-GBEN (2)
	283	04/05/60	230	44	2ND TRANCHE SRS.M	220TH ADLA	225 (ADLA)	TR-K
	284	10/05/60	231	45	2ND TRANCHE SRS.M	221ST ADLA	226/(F-SF)OW (Sep 74)	226/HE (SEP 84)
	285	10/05/60	232	46	2ND TRANCHE SRS.M	222ND ADLA	<u>PVD DIJON BY 0613</u>	
	286	20/05/60	233	47	2ND TRANCHE SRS.M	223RD ADLA	227/F-UKIE	TJ-X
	287	20/05/60	234	48	2ND TRANCHE SRS.M	224TH ADLA	228 (ADLA)	228/722-EA
	288	25/05/60	235	49	2ND TRANCHE SRS.M	225TH ADLA	228/41-AF (Noted 78)	228/43-BU
							229 (ADLA)	TL-KAJ
							230 (ADLA)	5V-M
							231 (ADLA)	TL-KAG (1)
							232 (ADLA)	TL-KAI
							233 (ADLA)	TL-KAH
							234/SD (ADLA)	<u>WO 040669</u>
							235 (ADLA)	235/43-BL

289	13/06/60	236		50	2ND TRANCHE SRS.M	226TH ADLA	236 (ADLA)	236/TU-V
290	15/07/60	237		51	2ND TRANCHE SRS.M	227TH ADLA	237 (ADLA)	5R-MNC
291	13/06/60	238		52	2ND TRANCHE SRS.M	228TH ADLA	238 (ADLA)	TZ-
292	17/06/60		48	33	33RD CIVIL	AIR TCHAD	F-OBPY	DEST 61
293	21/06/60		50	34	34TH CIVIL	U.A.T.	F-BJLR	DEST 060261, CNX 221161
294	21/06/60	239		53	2ND TRANCHE SRS.M	229TH ADLA	239 (ADLA)	239/5-MO
							N239HL	DAM 101003, CNX 150517
295	22/06/60	240		54	2ND TRANCHE SRS.M	230TH ADLA	240/F-SDBN	240/HF (GMT 59)
							240/44-CJ	F-BNDD(4)/330-IN
296	22/06/60	241		55	2ND TRANCHE SRS.M	231ST ADLA	241 (ADLA)	241/5T-M
297	30/06/60	242		56	2ND TRANCHE SRS.M	232ND ADLA	242 (ADLA)	ACC 200962, REPAIRED BY 0
298	15/07/60	243		57	2ND TRANCHE SRS.M	233RD ADLA	243/F-SELI	5R-MND
299	30/06/60	244		58	2ND TRANCHE SRS.M	234TH ADLA	244 (ADLA)	244/41-AC
							<u>WO 270582, METZ DUMP BY 0685</u>	
300	15/07/60	245		59	2ND TRANCHE SRS.M	235TH ADLA	245 (ADLA)	5R-MNE
301	25/07/60	246		60	2ND TRANCHE SRS.M	236TH ADLA	246 (ADLA)	246/12-XG
302	25/07/60	247		61	2ND TRANCHE SRS.M	237TH ADLA	247 (ADLA)	247/313-(F-TG)TY
							F-GDSN	
303	21/09/60	248		62	2ND TRANCHE SRS.M	238TH ADLA	248 (ADLA)	
304	28/09/60	249		63	2ND TRANCHE SRS.M	239TH ADLA	249 (ADLA)	F-OGCM
305	21/09/60	250		64	2ND TRANCHE SRS.M	240TH ADLA	250 (ADLA)	250/OL
							250/315-SL	STD PONT DE L'ARCHE
306	28/09/60	251		65	2ND TRANCHE SRS.M	241ST ADLA	251 (ADLA)	251/ST
							251/43-BL	251/12-XH (Jun 86)
							<u>PVD CUERS BY 0900, PVD LE LUC 02 – 0713</u>	
307	28/09/60	252		66	2ND TRANCHE SRS.M	242ND ADLA	252 (ADLA)	TU-VAJ
308	28/09/60	253		67	2ND TRANCHE SRS.M	243RD ADLA	253 (ADLA)	253/5-MN
							<u>PVD EVREUX BY 0604 – 0613</u>	
309	06/10/60	254		68	2ND TRANCHE SRS.M	244TH ADLA	254/F-SDBN	254/315-TZ
							254/30-QB (May 84)	254/(F-M)AGA
310	07/10/60	255		69	2ND TRANCHE SRS.M	245TH ADLA	255/43-BP	255/5-ML
							F-GGKL	G-CIGH
311	07/10/60	256		70	2ND TRANCHE SRS.M	246TH ADLA	256 (ALAT) (Noted 85)	256/43-BF
							F-GHGB/10.S.37	
312	07/10/60	257		71	2ND TRANCHE SRS.M	247TH ADLA	257 (ADLA)	257/44-CK (Sep 84)
							F-GGKM	N
313	24/10/60	258		72	2ND TRANCHE SRS.M	248TH ADLA	258 (ADLA)	258/41-AP
							258/F-YCZP	258/F-YEEH
314	24/10/60	259		73	2ND TRANCHE SRS.M	29TH ADLA	259 (ADLA)	259/HF (GMT 59)
85	315	08/11/60	44	35	35TH CIVIL	1ST SGAC	F-BJLT	F-GJLT
	316	21/11/60		74	2ND TRANCHE SRS.M	250TH ADLA	260 (ADLA)	260/070-MH

SA291	317	21/11/60	261	75	2ND TRANCHE SRS.M	251ST ADLA
	318	21/11/60	262	76	2ND TRANCHE SRS.M	252ND ADLA
	319	21/11/60	263	77	2ND TRANCHE SRS.M	253RD ADLA
	320	30/01/61	264	78	2ND TRANCHE SRS.M	254TH ADLA
	321	01/12/60	265	79	2ND TRANCHE SRS.M	255TH ADLA
	322	01/12/60	266	80	2ND TRANCHE SRS.M	256TH ADLA
	323	22/12/60	267	81	2ND TRANCHE SRS.M	27TH ALAT
	324	22/12/60	268	82	2ND TRANCHE SRS.M	28TH ALAT
	325	22/12/60	269	83	2ND TRANCHE SRS.M	29TH ALAT
	326	22/12/60	270	84	2ND TRANCHE SRS.M	30TH ALAT
	327	24/01/61	271	85	2ND TRANCHE SRS.M	31ST ALAT
293	328	30/01/61	272	86	2ND TRANCHE SRS.M	257TH ADLA
	329	22/02/61	273	87	2ND TRANCHE SRS.M	258TH ADLA
	330	06/02/06	274	88	2ND TRANCHE SRS.M	32ND ALAT
	331	06/02/61	275	89	2ND TRANCHE SRS.M	33RD ALAT
306	332	06/02/61	276	90	2ND TRANCHE SRS.M	34TH ALAT
	333	22/02/61	277	91	2ND TRANCHE SRS.M	259TH ADLA
	334	22/02/61	278	92	2ND TRANCHE SRS.M	260TH ADLA
	335	22/02/61	279	93	2ND TRANCHE SRS.M	261ST ADLA
	336	09/02/61	280	94	2ND TRANCHE SRS.M	35TH ALAT
	337	09/02/61	281	95	2ND TRANCHE SRS.M	36TH ALAT
	338	01/12/60	282	96	2ND TRANCHE SRS.M	262ND ADLA
	339	09/02/61	283	97	2ND TRANCHE SRS.M	37TH ALAT
	340	22/03/61	284	98	2ND TRANCHE SRS.M	263RD ADLA
	341	22/03/61	285	99	2ND TRANCHE SRS.M	264TH ADLA

STD BY 0984

261 (ADLA) 261/(F-RAC)K (ET 65)
 F-WGKN F-GIBN/30-QA
 262 (ADLA) 262/8-OY (Jun 85)
 F-GGBO CNX 020914
 263/F-UIEA WO 240561
 264 (ADLA) TU-TXF
 265 (ADLA) DBR 030861
 266 (ADLA) 266/M (ET 2.60)

STD DAX MUSEUM BY 0609

267 (ALAT) 267/(F-M)AMS
 268/(F-M)MBF 268/(F-M)BCA (Jul 69)

WFU BY 0777

269 (ALAT) 269/41-AI
 270/(F-M)MGA DBR 270464, GIA BOURGES
 271/(F-M)MMB WO 210977
 272 (ADLA) 272/070-MG (May 81)

WO 211087

273 (ADLA) 273/315-SP
 274 (ALAT) WO 080268
 275/(F-M)ANB 275/(F-M)AOA
 275/(F-M)AQA (Jun 74) 275/(F-M)MAA (Sep 83)
 275/(F-M)AHQ F-GHUH
 276/(F-M)ANN 276/(F-M)AGB
 276/(F-M)MAB (Jun 87) F-WGGF

N

277 (ADLA) 5R-M
 278 (ADLA) 5U-M
 279 (ADLA) 279/44-CL (Jun 72)
 F-GJLP
 280/(F-M)ANQ 280/(F-M)AHR
 281/(F-M)ANP 281/(F-M)CWM

WFU MONTAUBAN 010793, DAX STORE BY 0609 AS 'MTB'

282/F-SCRE 282/11-OB (Jun 86)
 283/(F-M)ANR 283/(F-M)ATQ
 283/(F-M)AHP 283/(F-M)MJU (Noted 89)
 N2510P
 284 (ADLA) 284/(F-UH)XI (EC 12)
 F-WGKO F-GGKO

STILL REGISTERED WITH DGAC 050220

285 (ADLA) 285/43-BO (Apr 98)

	342	22/03/61	286	100	2ND TRANCHE SRS.M	265TH ADLA
	343	11/04/61	287	101	2ND TRANCHE SRS.M	38TH ALAT
	344	11/04/61	288	102	2ND TRANCHE SRS.M	39TH ALAT
SA324	345	11/04/61	289	103	2ND TRANCHE SRS.M	40TH ALAT
	346	12/04/61	290	104	2ND TRANCHE SRS.M	266TH ADLA
	347	12/04/61	291	105	2ND TRANCHE SRS.M	267TH ADLA
327	348	28/04/61	292	106	2ND TRANCHE SRS.M	268TH ADLA
	349	12/05/61	293	107	2ND TRANCHE SRS.M	41ST ALAT
	350	12/05/61	294	108	2ND TRANCHE SRS.M	42ND ALAT
	351	12/05/61	295	109	2ND TRANCHE SRS.M	43RD ALAT
	352	23/05/61	296	110	2ND TRANCHE SRS.M	269TH ADLA
	353	24/07/61	297	111	2ND TRANCHE SRS.M	270TH ADLA
	354	19/05/61	298	112	2ND TRANCHE SRS.M	271ST ADLA
	355	25/05/61	299	113	2ND TRANCHE SRS.M	44TH ALAT
	356	05/06/61	300	114	2ND TRANCHE SRS.M	45TH ALAT
	357	05/06/61	301	115	2ND TRANCHE SRS.M	46TH ALAT
	358	08/06/61	302	116	2ND TRANCHE SRS.M	272ND ADLA
	359	14/06/61	303	117	2ND TRANCHE SRS.M	273RD ADLA
	360	21/06/61	304	118	2ND TRANCHE SRS.M	274TH ADLA
	361	21/06/61	305	119	2ND TRANCHE SRS.M	275TH ADLA
	362	05/07/61	306	120	2ND TRANCHE SRS.M	276TH ADLA
	363	05/07/61	307	121	2ND TRANCHE SRS.M	277TH ADLA
	364	17/05/61	308	122	2ND TRANCHE SRS.M	278TH ADLA
	365	18/05/61	309	123	2ND TRANCHE SRS.M	279TH ADLA

STD BORDEAUX-MERIGNAC BY 0710

286 (ADLA) 286/CAN-16 (Jun 89)

CNX 290469, WFU

287/(F-M)ANS 287/(F-M)BPA (Jun 77)

288 (ALAT) WO 250581, WFU MONTAUB/

289/(F-M)CQU F-GLMF

290 (ADLA) 290/41-AD

(F-WGGD) (F-BGGD)

291 (ADLA) 291/HF (ISTRES BF)

291/43-BL 291/315-ST (Sep 77)

N ?

292/ ADLA 292/C (ET 2.60)

292/5-ML (May 87) F-GJJM/3.S.17

293/(F-M)ANT 293/(F-M)ANA

N293BR

294/(F-M)BFU 294/(F-M)AYO

F-GDQV STD ST LUBIN, PVD GRESSE'

295/(F-M)ANU 295/(F-M)MJP

VH-HFA

296 (ADLA) 296/F-UMEC

GIA VITROLLES BY 0305, TO ALENCON BY 0608

297 (ADLA) 297/TU-V

298 (ADLA) 298/BA (GI 312)

298/44-CD F-GFVV

299/(F-M)ANK 299/(F-M)AOC

PVD LYON-CORBAS BY 1113

300 (ALAT) 300/TU-V

301 (ALAT) N1138G

302 (ADLA) TL-KAG (2)

303 (ADLA) 303/44-CE (F-SCCE)

F-WGKP F-GGKP

OY-SLV

304 (ADLA) 304/XH

DBR 300578, PVD LONGVIC BY 98

305 (ADLA) 305/T (ET 65)

305/30-QN PVD REIMS TOWN BY 0999, F

306 (ADLA) 306/721-EP (Apr 78)

307 (ADLA) 5R-M

308 (ADLA) 5R-M

309 (ADLA) 309/43-BS

	366	18/05/61	310		124	2ND TRANCHE SRS.M	280TH ALAT
281	367	1961		51	36	36TH CIVIL	1ST PORTUGAL
280	368	1961		52	37	37TH CIVIL	2ND PORTUGAL
282	369	1961		53	38	38TH CIVIL	3RD PORTUGAL
	370	31/07/61	311		125	2ND TRANCHE SRS.M	281ST ADLA
	371	31/07/61	312		126	2ND TRANCHE SRS.M	282ND ADLA
	372	31/07/61	313		127	2ND TRANCHE SRS.M	283RD ADLA
	373	15/11/61	314		128	2ND TRANCHE SRS.M	284TH ADLA
	374	11/10/61	315		129	2ND TRANCHE SRS.M	285TH ADLA
	375	15/11/61	316		130	2ND TRANCHE SRS.M	286TH ADLA
	376	15/11/61	317		131	2ND TRANCHE SRS.M	287TH ADLA
	377	06/12/61	318		132	2ND TRANCHE SRS.M	288TH ADLA
	378	06/12/61	319		133	2ND TRANCHE SRS.M	289TH ADLA

	309/8-OY	F-GHFH
	N309MD	
310 (ADLA)	5V-M	
	F-WJSO	3301 (PORT AF)
	F-ZKAT	3302
	F-ZKAU	3303
311 (ADLA)		311/H (ET 65)
<u>PVD LESSAY</u>		
312 (ADLA)		312/113-DF
	F-WGKQ	F-GGKQ
<u>PVD ALTEN-BUSECK BY 0510 AS "7-JI"</u>		
313 (ADLA)		6W-SAL
314 (ADLA)		(XT-M)AC
315 (ADLA)		315/5-MN
	F-GIFZ	<u>PVD ALBERT</u>
316 (ADLA)		316/67-OQ (Jul 82)
F-GGKR/315-SN		C-FNLZ
317 (ADLA)		TJ-XAF
318 (ADLA)		318/5T-M
319 (ADLA)		<u>WO 040769</u>

NOT FULLY IDENTIFIED

	SPARES		49			F-BJLU	<u>WFU COA LIM TO 200275</u>
283	?		54			F-ZKAV	3304 (PORT AF)
	?		55			<u>PVD SINTRA AS 3304</u>	
	?					F-ZKAL	F-BJSL
	?	22	19			19/F-RACZ	<u>WO 050176 IN BRAZIL</u>
	?	?	?			5R-MNA	<u>WFU</u>
	?	?	?			5R-MNF	<u>WFU</u>
	?	?	?			5U-MAH	<u>WFU</u>
	?	39?	13?			44-CE (IN 1968)	
	?	?	?			5-MD (IN 1968)	
	?	?	?			FMIL <u>PVD NARBONNE RADAR SIT</u>	
	?	?	?			MAROC AF	<u>PVD MARRAKECH</u>
	?	?	?			MAROC AF	<u>PVD RABAT</u>

Sipa F/I # Date

182	Nov 58	?
213	Apr 59	?
284	Apr 60	?

Notes

The significance of “Nombre” (Number) is not confirmed as they don't appear on any paperwork, but they appear to be some form of line number.
On pages 68 and 69 of “Les avions de Max Holste” are photographs of the Reims production line, where numbers can be seen on the base of the fuselage jigs.
It is tempting to think that these are the “Nombres”.

mh-1521.fr shows pre-production aircraft with a P prefix to the c/n.

Sipa fuselage numbers are not used in order

The “Nombres de serie” appear on official paperwork, including the DGAC website, but without the M or C suffix widely reported (see photographs of the manufacturer's plates below).
However, the C suffix does appear on the tails of some civil aircraft, e.g. F-BJLR (50C) and Portuguese 3301 (51-C).

Information in yellow is either incomplete or not confirmed

Dates in brackets are noted dates in photographs on the mh-1521.fr website

Information on Argentine Police MH.1521 is believed correct from Argentine websites

PRODUCTION TOTALS

PROTOTYPES 2

PRE-SERIES MILITARY

ARMEE DE L'AIR

ARMEE DE TERRE

19

SERIES MILITARY

1ST TRANCHE

ARMEE DE L'AIR

ARMEE DE TERRE

AERONAVALE

186

2ND TRANCHE
ARMEE DE L'AIR
ARMEE DE TERRE

133

CIVIL PRODUCTION 38

GRAND TOTAL 378

FRENCH MILITARY TOTALS

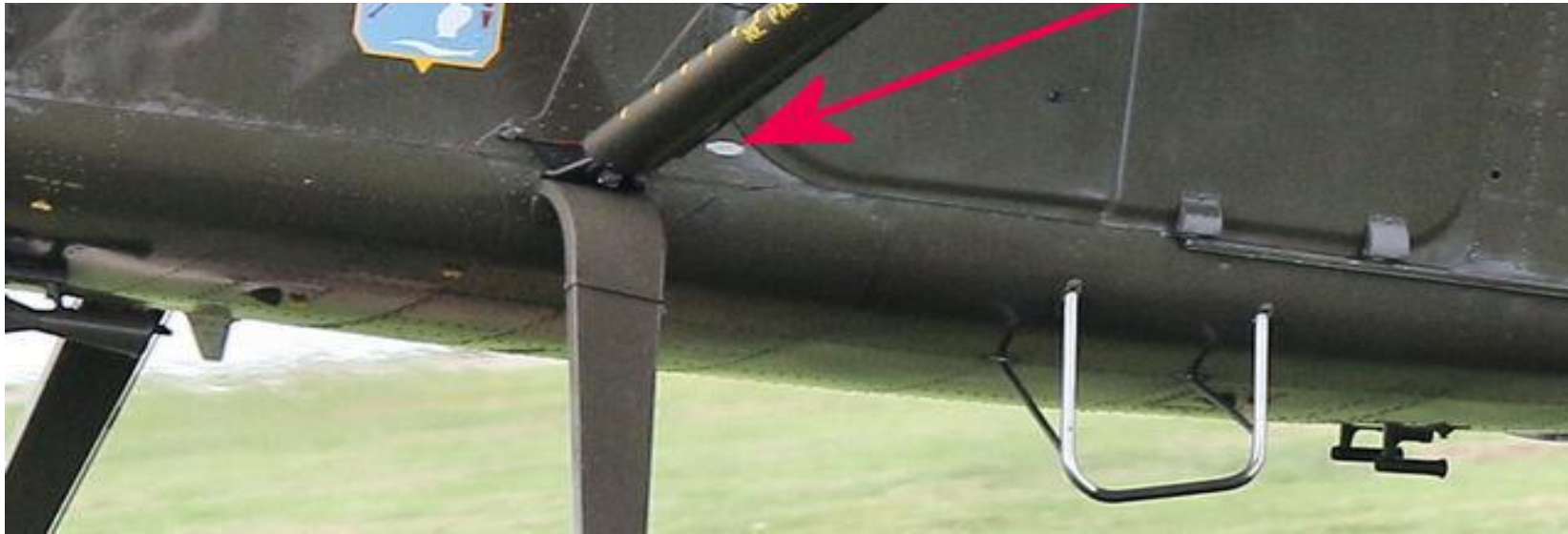
ARMEE DE L'AIR
ARMEE DE TERRE
AERONAVALE

C/N PLATE LOCATIONS

There can be 3 c/n plates affixed to the MH1521.

The **FIRST** one is the SIPA Aviation centre/rear fuselage number which is normally affixed to the port fuselage side in this location:-



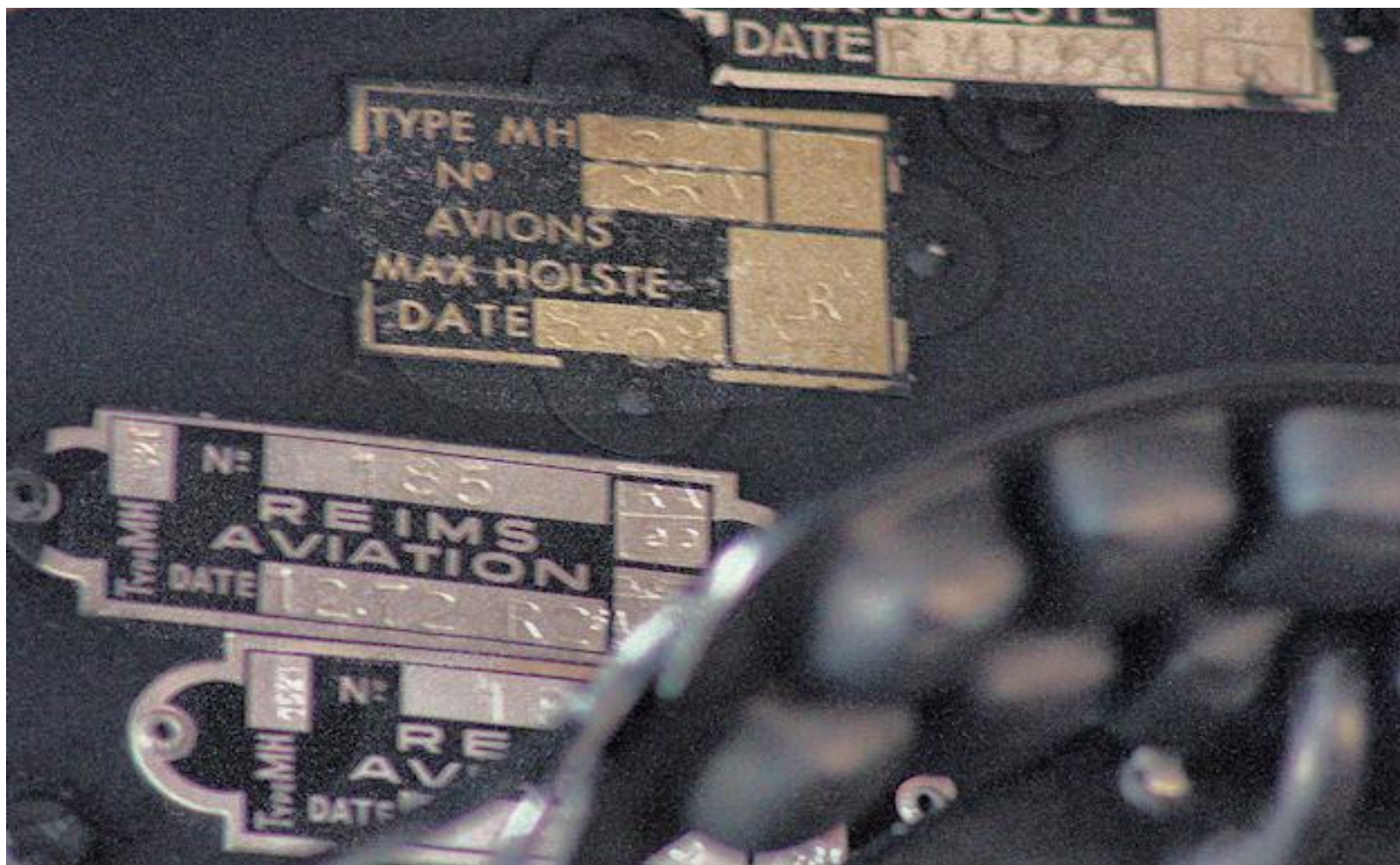


It looks like this: _



The **SECOND** is the Max Holste plate located inside the fuselage on the starboard wing root at co-pilot head height and can be photographed through the port cockpit triangular window if legitimate access is available.





Note that there are 2 Max Holste plates on this occasion, one quoting "185", the other quoting "185M", the upper plate appears to be the original, the lower appears to be affixed after a major overhaul in 1968.

Also in the above photo is the **THIRD** type of plate, the Reims Aviation plates, applied at each major overhaul, in this case twice, the first with an R suffix after the date, the second with and R2 suffix.

Note that there is only one out of 4 plates with the M suffix, thus it appears that these aircraft were widely identified without the suffix.



To catch the unwary, the Holste plate on 255 above has been oversprayed, probably during the first major overhaul by Reims Aviation.

However, the one below from 292 also with 4 mounting holes is black and silver as expected. Again, please note that the earlier Holste plate shows "292M" whereas the later plate shows just "292".





Credit for all these photos goes to Paul Jackson.

Credits

Phil Jung, Ken Dalton, Martin S Best, Paul Jackson & Tony Hyatt especially and all other AB-ix contributors

Also websites:-

militair.com

mh-1521.fr

Thanks also to the following books:-

“Les avions de Max Holste” by Jacques Delarue, published by Le Trait D'Union in 1993, which forms the basis of this version (April 2020) of the production list.

“French Military Aviation” by Paul. A. Jackson, published by Midland Counties for the older French military codes.

As ever, any updates are most welcome, addressed by e-mail to les_hitchings@hotmail.com

Les Hitchings

April 2020

⌈

GIA, CNX 070275

CNX 011062

SCR , SOC 100975

XT-MAF

GIA ROCHEFORT 080859

06/XC/ER33

CNX 67, SCR?

PVD VILLACOUBLAY

F-ZBDA IN 1965

08/F-SCOL

SOLD C81

WO? SCR?

010/F-SFZB

010/44CF (Jun 83)

011/118-IU

41-AA WHERE?

013/F-SDOL

.STD LE SAULNIER C 0505

44-CE WHERE?

015/43-BV

PVD MAS PALEGRY BY 150701

016/43-BN

N16MH/68-AF

018/314-DA (Jul 81)

WO 86 (SEE END)

020/F-MBCA

WO 310161

CNX 1264, SCR?

021/- (AN)

022/F-MAYS

5/SFPB

5/L/ET 65

STD ORANGE, PVD ORANGE

F-GGCN/"YE"

N98BF/"41-AF"

10/5-MQ

PVD VILLEURBANNE, LYON

F-BNEM

13/44-CE

16 (ELA 43)

F-GHJH

18/314-DA (Noted 86)

19/F-SFZS

F-BMJO

20/315-SQ (May 99)
G-BWGG

21/F-SFPQ

C-GJKG?

N4022

F-WGKS

24/CB (ELA 44)

F-BNEP

F-GEDC

LQ-FYA?

PG-334 (ARG AF)

PG-335 (ARG AF)

LQ-FYB

F-WGKH

33/(F-M)MJK (Jun 89)

34/F-UGMD

WFU C O A EXP 0874, CNX 070275

PG-336 (ARG AF)

PG-337 (ARG AF)

PG-332 (ARG AF)

F-BNER

LQ-FZO

PG-338

PG-340 (ARG AF)

WO 010661

38/(F-M)MJC (Nov 08)

39/314-DB

39/41-AK (May 76)

CNX 041295

CNX 080267, TO 7T-??

SCR

SCR

CNX 060378, SCR

40/118-IZ

WFU MONTAUBAN BY 0982

WFU 171279

F-BNES

∟ 0406

50/44-CA

WFU

F-WGKI

WFU

CNX 080267, TO 7T-???

WFU

WFU

59/5-MQ

WFU, CNX 211179, SCR

F-AZEZ

63/CN-AHD PVD CASABLANCA-ANFA BY 0406

65/F-SFPE

WFU, C O A SUSP 110377, CNX 251174

WFU, C O A EXP 040373, CNX 070275

70/8-OM

IC BY 0608, PVD MEUCON BY 0810

TT-KAC (2)

COLL 250672

WO 151165

76/CN-A

WFU

F-GHUG

GIA MALMEN

WO 150858

OR TO ISRAEL?

CR 150368, CNX 180269

WO 241067

SCR, CNX 131072

WFU
SOLD 81

CNX 101176
WFU
WFU
WFU

91/8-OZ

F-BMMP/404

CNX 280898 BUT AT NAIROBI 0205-0914
STD MONTAUBAN BY 0693, PVD BY 1208
CN-AHE

DLICT CHAMBERY
DBR 270778, CNX 111078
WFU, C.OA EXP 201173, CNX 070275

SOLD 81
WFU, MONTAUBAN STORE BY 1081
TR-KAB

F-GGLZ (2)

F-GHFG
PVD RABAT-SALE 78
106/33-XB (Jun 82)

107 (ADLA)
F-BNEX/50S.9
SCR, CNX 160371

DLICT 73
113/701-HN (Noted 75)

0582
GIA VITROLLES, TO JOUQUES BY 0695
SCR, CNX 251174

7T-VCF

F-GMMH

PT-DZQ

SHOT DOWN 140178

120/CN-A?

121/F-UIXB

124/41-AE

STD MONTELMAR BY 0697, PVD BY 0701-0911

CNX

WFU

F-GGGK

128/HD (NIMES BF)

DBR 250664

REIMS DUMP 78

6W-SAM

...070-MH WO 210780

DAM 310767

137/44-CI (May 73)

138/65-CB

95 AS "F-BJLR"

DBR 230766

142/10-KE

(F-GGGQ)

144/7-JF

N70463

WFU MONTAUBAN BY 1081

F-BXCP

150/(F-M)AFR

WO PRIOR 1088, SCR, CNX 040313

WO 251163

ACC 160668

154/44-CC

155/88-JV

156/88-JW

TY-AAE (1)

TZ-KBI

158/43-BO

BU 0685, PAU-UZEIN DUMP BY 0486

163/12-XI

164/(F-M).JZ (Jul 79)

ACC 110763

WFU, C O A EXP 0466

DBR 150465, TO PUBLIC DUMP PORT GENTIL

170/315-SQ (Sep 82)

WO 060269

173/41-AL

176/118-IS
TR-LRC

SCR, CNX 0867

5R-

179/44-CL

STD CERNY LA VILLE, TO SANTAREM, PORTUGAL BY 1010

F-GJAC/44-AC

VILLACOUBLAY FD 81

CR 070685

SOLD 81

184/8-OY

185/44-CA (Noted 87)
G-BWLR

STD CHATEAUDUN 0881

187/F-ZAGM/CAN-21

189/315-SK

GIA CERNY LA VILLE, TO MONTMIRAULT/CERNY BY 0505, TO LFA 0216

N81563/44-GI

195/13-TD

C-

WO 220569, COGNAC DUMP BY 74

WO 190777

PVD MERVILLE, PVD ALBERT BY 0414

WFU 73

WFU

ACC 150861

PVD N'DJAMENA BY 1106-0512

WO 191171

207/A (ET 65)

XY

208/7-JI (Aug 81)

SCR

DAKAR DUMP 1205

F-GGKK

TY-A

TJ-XAC (2)

214/41-AI (Noted 80)

WFU

WFU

WO 070688, CNX 011188

218/2-HH (Sep 84)

WFU

WFU, C O A LIM TO 291065

WFU

ACC 010762

224/M (ET 2.60)

PVD LONS LE SAULNIER

226/2-HF

228/(33)-XB

PVD BORDEAUX 0787-0913

WO 75

WO 130163

STD - 0977

WFU
WO 081063
WFU

239/65-CK (Jun 87)

240/315-SK

WFU
70466
PVD D'IVATO A ANTANANARIVO
244/44-CA

WO 290665
N246MH
247/3-KY

DEST. CNX 290469
250/41-AF

251/315-ST
251/44-CB

721-EP WHERE?

WO 210367
253/OL

254/313-TY

PVD RENNES BY 0503
F-WGKL

256/43-BP

F-WGKM

258/41-AJ

PVD ROCHEFORT-SOUBISE AS CAN-16 BY 0813
WO 250774

260/44-CI

261/721-EB

CNX 091216

F-WGBO

266/12-XD (May 73)

WFU MONTAULBAN BY 0982

268/(F-M)CWM

PVD DAX BY 0897 – 0913

44-GE

DAM 301271, COGNAC DUMP BY 74

275/(F-M)ATQ

275/(F-M)MJA (Noted 92)

PVD SAINT FLORENTIN 0616

276/(F-M)MGA

(F-M)ATQ AT SOME POINT

F-GGGF *Cancelled 101197*

WO 200669

279/41-AZ (Aug 84)

F-WKQV

281/(F-M)MAX (Jun 89)

”

F-GJRA/EC

283/(F-M)ATR

F-GIDJ

284/41-AM (Noted 85)

WO, AT LA FERTE ALAIS BY 0795

285/F (ET 65)

F-OGCN

N1138V

AN BY 0981

290/11-OB (Jun 82)

PVD NANCY-> ALBERT BY 0609 – 0414

291/44-CG

F-WHIQ

292/65-CC

F-BXCS

F-WIUL

Y. CNX 221215

F-GHUI

F-GFJY

WFU

298/313-TY

F-GHUO

WFU

ACC 150365

303/315-SL (F-TESL)

HA-SLV

304/3-KY (Aug 77)

305/7-JI (Noted 84)

PVD BETHENY BY 0612

GIA. CHATEAUDUN DUMP BY 0582

309/44-CE

N77RZ

PVD SINTRA

WFU 76, SCR

PVD OTA

311/4-WZ (May 82)

312/7-JI (Jun 78)

LX-MAX

PVD THIES 0612

315/070-MG

F-WGKR

WFU

CS-AQJ

CR-L

ACCORDING TO ASN

E, GONE, FATE?

Credit for all these photos goes to Paul Jackson.